

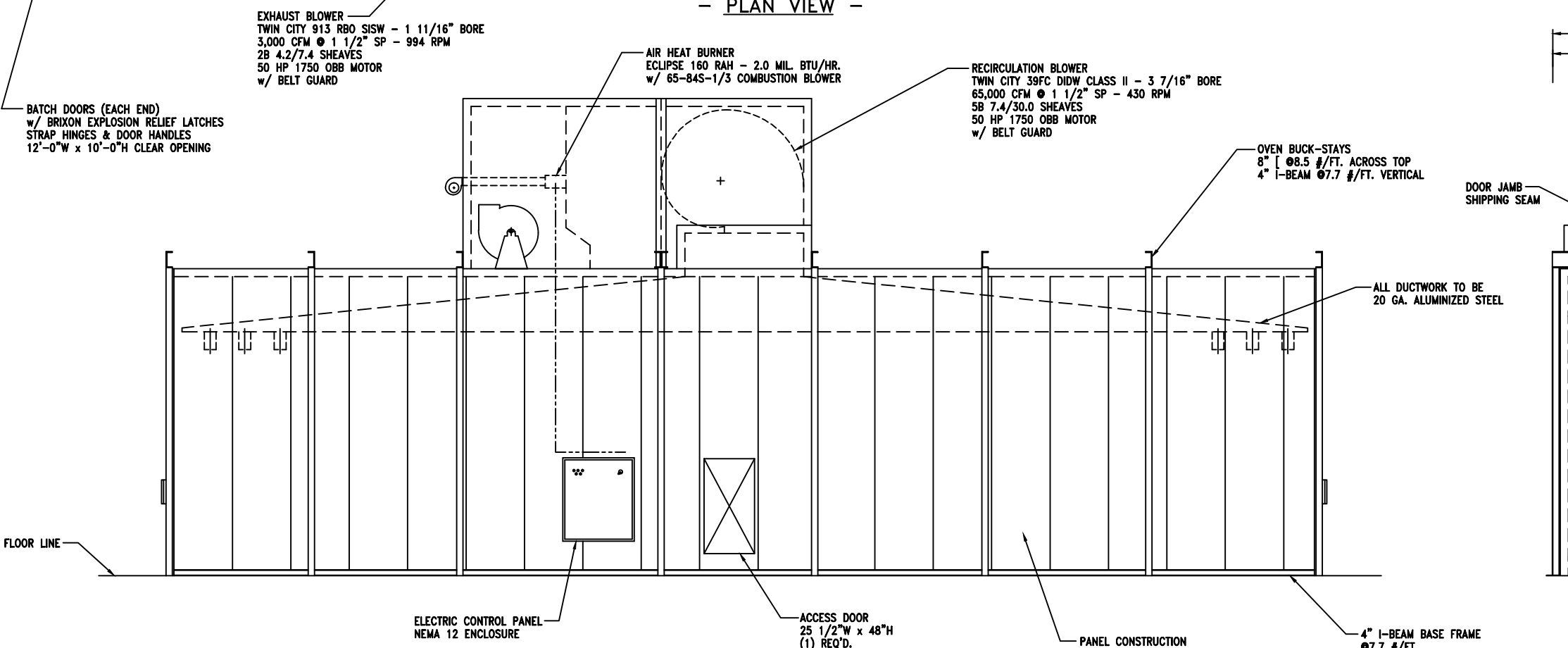
- PLAN VIEW -

**OVEN DATA**

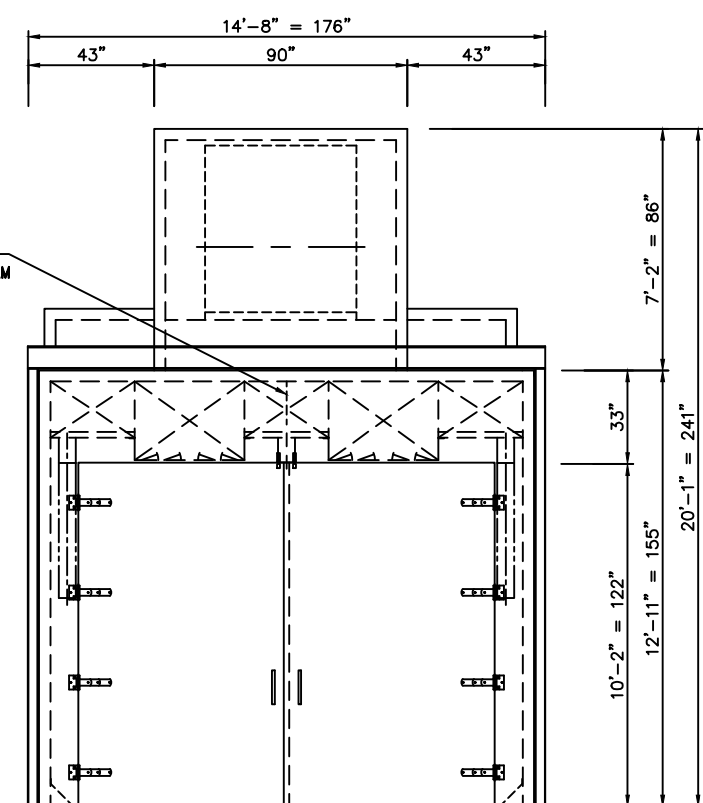
- OPERATING TEMP \_\_\_\_\_ 500°F MAX.
- RECIRCULATION \_\_\_\_\_ 65,000 CFM
- EXHAUST \_\_\_\_\_ 3,000 CFM
- EXPLOSION RELIEF AREA \_\_\_\_\_ 540 SQ. FT.
- PURGE TIME \_\_\_\_\_ 12 MINUTES
- MAX. ALLOWABLE SOLVENT ENTERING OVEN \_\_\_\_\_ 3.12 GAL/BATCH @400°F
- ELECTRIC SUPPLY \_\_\_\_\_ 480/3/60
- GAS SUPPLY \_\_\_\_\_ NATURAL GAS @ 10" W.C.

- CUSTOMER TO PROVIDE SUFFICIENT FRESH AIR VENTILATION FOR PROPER OPERATION OF HEATING & EXHAUST SYSTEMS.
- CUSTOMER TO REPLACE VEE-BELTS EVERY 12 MONTHS OF OPERATIONS
- CUSTOMER TO PROVIDE GUARDS, LADDERS, AND SCAFFOLDING TO OSHA SPECIFICATIONS DURING INSTALLATION, START-UP, MAINTENANCE, AND CLEANING OF THIS EQUIPMENT.
- THIS EQUIPMENT IS TO BE MAINTAINED AND OPERATED IN ACCORDANCE WITH NFPA, ANCI, AND OSHA STANDARDS.

◆ DENOTES EXPLOSION RELIEF PANEL



- SIDE ELEVATION -



- END VIEW -

EXHAUST BLOWER  
TWIN CITY 913 RBO SISW - 1 11/16" BORE  
3,000 CFM @ 1 1/2" SP - 994 RPM  
2B 4.2/7.4 SHEAVES  
50 HP 1750 OBB MOTOR  
w/ BELT GUARD

AIR HEAT BURNER  
ECLIPSE 160 RAH - 2.0 MIL. BTU/HR.  
w/ 65-84S-1/3 COMBUSTION BLOWER

RECIRCULATION BLOWER  
TWIN CITY 39FC DIDW CLASS II - 3 7/16" BORE  
65,000 CFM @ 1 1/2" SP - 430 RPM  
5B 7.4/30.0 SHEAVES  
50 HP 1750 OBB MOTOR  
w/ BELT GUARD

OVEN BUCK-STAYS  
8" [ @8.5 #/FT. ACROSS TOP  
4" I-BEAM @7.7 #/FT. VERTICAL

DOOR JAMB SHIPPING SEAM

ALL DUCTWORK TO BE 20 GA. ALUMINIZED STEEL

ELECTRIC CONTROL PANEL  
NEMA 12 ENCLOSURE

ACCESS DOOR  
25 1/2"W x 48"H  
(1) REQ'D.

PANEL CONSTRUCTION  
20 GA. ALUMINIZED STEEL INTERIOR  
4" MINERAL WOOL INSULATION  
20 GA. MILD STEEL EXTERIOR  
(1) COAT MACHINERY BLUE

4" I-BEAM BASE FRAME  
@7.7 #/FT.

NOTE: OVEN TO BE SHIPPED KNOCKED DOWN FOR FIELD ASSEMBLY.

HEATER UNIT, DOOR JAMBS & DOORS, AND DUCTWORK WILL BE SHIPPED IN ASSEMBLED MODULES.

CONTR.	MANUAL	INSUR.	SHOP	CUST.	SYM.	DATE	BY	RELEASED
								REVISION
								DATE
								02/11/13
FOR: T.C. SYSTEMS EVERETT, WA								DRAWN
								C. SCHOP
BATCH OVEN LAYOUT								SCALE
								1/2"=1'-0"
THE DESIGNS DETAILED ON THIS DRAWING ARE THE EXCLUSIVE PROPERTY OF JENSEN OVEN CO., INC. AND ARE NOT TO BE COPIED, REPRODUCED DIRECTLY OR INDIRECTLY OR USED TO MAKE IN WHOLE OR IN PART ANY APPARATUS HEREIN SHOWN.								JOB NO.
								6537
C:\ACADWIN\6500\6537OVEN.DWG								